

GY-HM850/890 How to update firmware

Note

- Disconnect/Remove USB cable, Video cables (HDMI, SDI, A/V, etc), other cables except AC Adapter.
- Do NOT power off during updating
- It takes 5 ~ 10 minutes for updating

■Preparation (Copying firmware to SD/SDHC memory card)

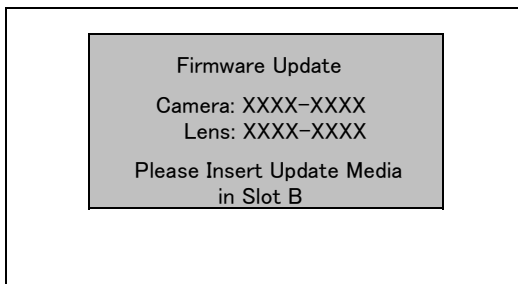
Note: Do NOT use SDHC memory card for recording. In case of using SDHC memory card, Format it with Camera.

- (1) Download the target file onto your PC from the download site and unzip it. (Double click it since it's a self extract file)
- (2) files.
- (3) Copy the unzipped files onto the SD/SDHC memory card, and confirm the directory in the card as follows;
\\PRIVATE\JVC\GY-HM850 (in case of GY-HM890, \\PRIVATE\JVC\GY-HM890)

■How to update

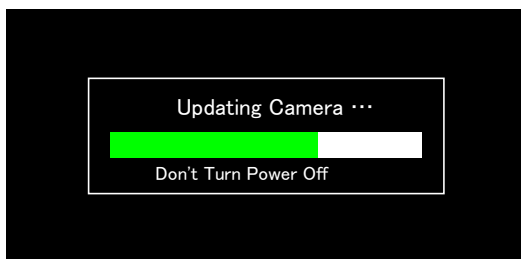
- (1) Confirm the POWER Switch is set to the OFF position, and while pressing both **"FOCUS ASSIST"** and **"MENU/THUMB"**, turn POWER Switch set to ON.
Current firmware version is appeared on the LCD screen.
<Note> Nothing appeared on the VF screen when updating

LCD screen



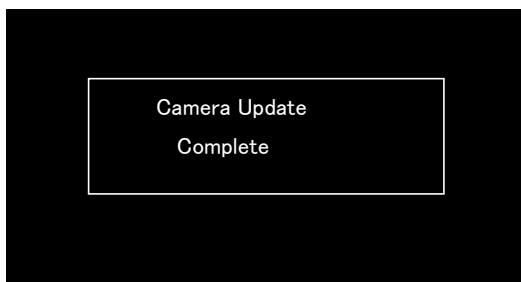
- (2) Insert SD/SDHC memory card for updating into card **slot B**. (Slot A is not valid for updating)
- (3) Updating will start automatically
The progress bar (as below) is displayed on the VF screen during updating.
And also Slot A LED is OFF and Slot B LED is blinking intermittently during updating.

LCD screen



- (4) When updating is completed, "Complete" message is appeared on the LCD screen (It takes 5 ~ 10 minutes for updating)
Both slot A LED and slot B LED blinks slowly and simultaneously.

LCD screen



- (5) Remove SD/SDHC memory card.
- (6) Update is completed
Unplug the AC Adapter once from the camera, plug the AC Adapter and turn POWER ON again.

■ When updating failed

If updating is incomplete for some reasons, the message "Update can't be Executed!" is displayed on the LCD screen on the step (4) above and slot A LED and slot B LED blink alternately.

LCD screen

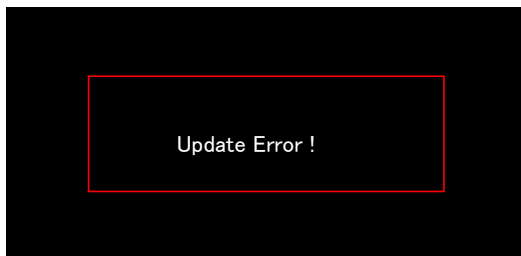


In this case, confirm whether the update file is correct or not.

■ Update Error

If updating can't be succeeded, "Update Error!" is displayed on the LCD screen on the step (4) above and slot A LED and slot B LED blink alternately.

LCD screen



In this case, please contact to support group since the camera might be defective.

* If the SD/SDHC memory card is not Write-Protected, the camera writes out to UPDLOG.TXT file, which file is NG when error occurred.